

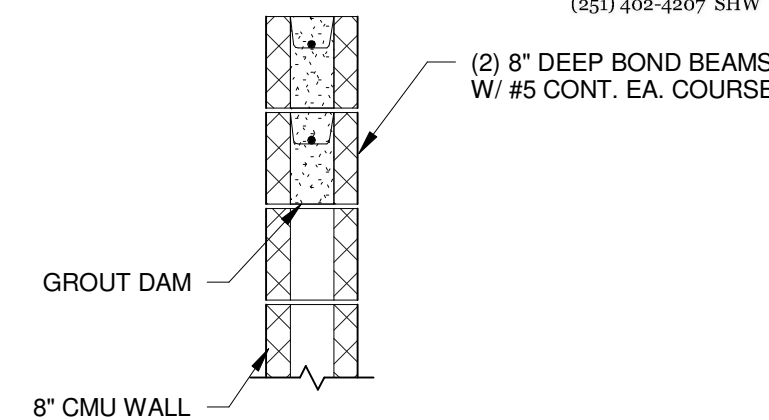
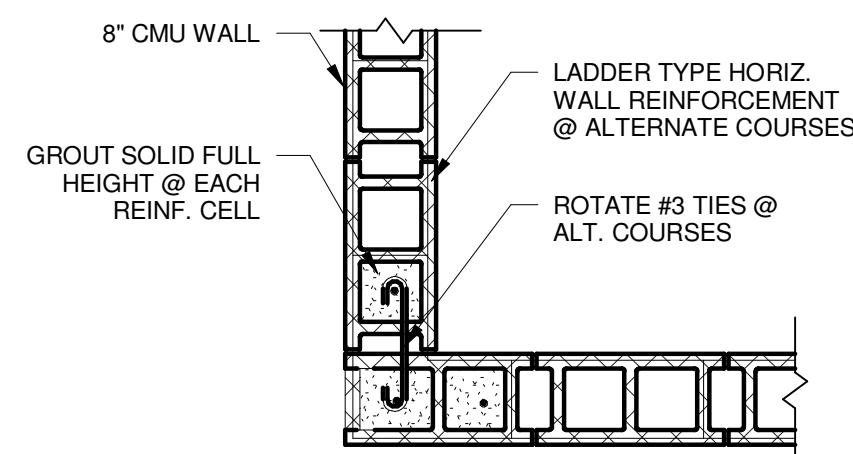
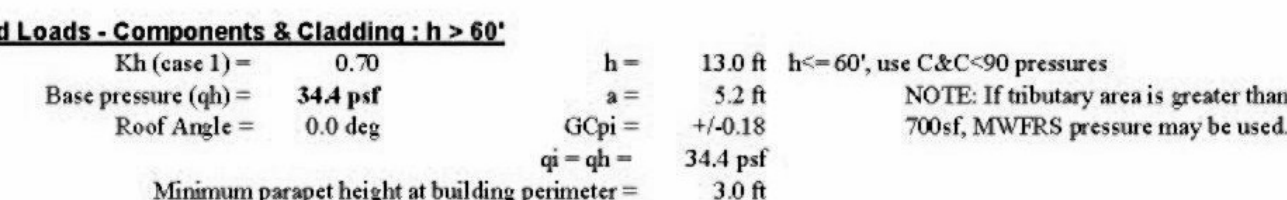
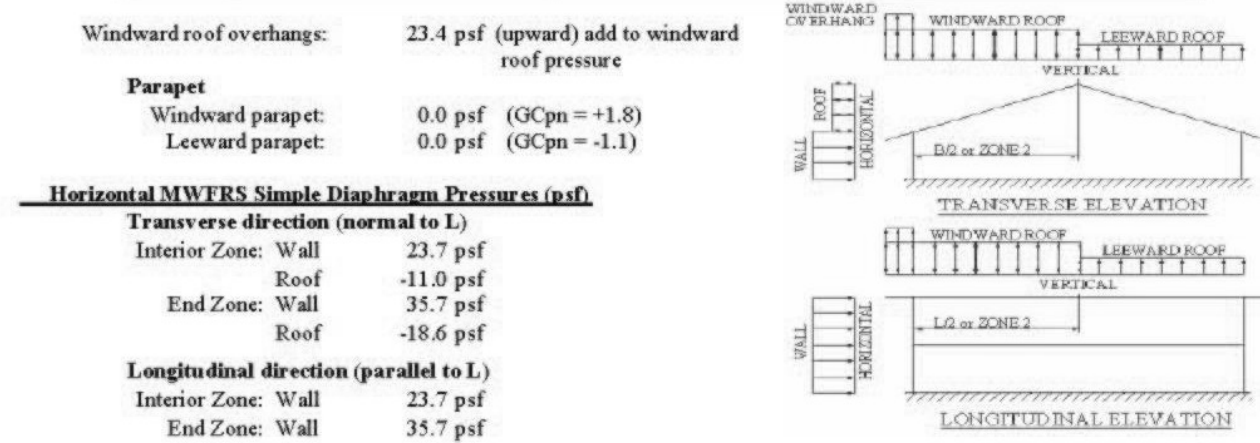
1. TO THE BEST OF OUR KNOWLEDGE, THE STRUCTURAL PLANS AND SPECIFICATIONS COMPLY WITH THE APPLICABLE REQUIREMENTS OF THE FLORIDA BUILDING CODE, 2007 EDITION.
2. THE STRUCTURAL DOCUMENTS ARE TO BE USED IN CONJUNCTION WITH THE ARCHITECTURAL DOCUMENTS. USE THESE NOTES IN CONJUNCTION WITH THE SPECIFICATIONS. IF A CONFLICT EXISTS, THE MORE STRINGENT REQUIREMENT SHALL PREVAIL.
3. COMPLY WITH REQUIREMENTS OF THE FLORIDA BUILDING CODE, AND ALL OTHER APPLICABLE FEDERAL, STATE, AND LOCAL CODES, STANDARDS, REGULATIONS AND LAWS.
4. ALL REFERENCED STANDARDS REFER TO THE EDITION IN FORCE AT THE TIME THESE PLANS AND SPECIFICATIONS ARE ISSUED FOR BIDDING.
5. REVIEW ALL CONTRACT DOCUMENTS FOR DIMENSIONS AND SITE CONDITIONS AND COORDINATE WITH FIELD DIMENSIONS AND PROJECT SHOP DRAWINGS PRIOR TO CONSTRUCTION. REPORT ANY DISCREPANCIES IN WRITING TO THE ARCHITECT/ENGINEER. DO NOT CHANGE SIZE OR DIMENSIONS OF STRUCTURAL MEMBERS WITHOUT WRITTEN INSTRUCTIONS FROM THE STRUCTURAL ENGINEER OF RECORD.
6. ANY DISCREPANCIES, OMISSIONS, OR VARIATIONS NOTED ON THE DRAWINGS OR IN THE SPECIFICATIONS DISCOVERED DURING THE BIDDING PERIOD SHALL BE IMMEDIATELY COMMUNICATED IN WRITING TO THE ARCHITECT/ENGINEER.
7. PROTECT EXISTING FACILITIES, STRUCTURES AND UTILITY LINES FROM ALL DAMAGE. EACH CONTRACTOR SHALL PROTECT HIS WORK, ADJACENT PROPERTY AND THE PUBLIC. EACH CONTRACTOR IS SOLELY RESPONSIBLE FOR DAMAGE OR INJURY DUE TO HIS ACT OR NEGLIGENCE.
8. THE CONTRACTOR IS SOLELY RESPONSIBLE FOR JOB SAFETY AND CONSTRUCTION PROCEDURES.
9. DO NOT SCALE DRAWINGS; USE DIMENSIONS.
10. SEE ARCHITECTURAL, PLUMBING AND MECHANICAL DRAWINGS FOR SIZE AND LOCATION OF OPENINGS IN STRUCTURE NOT SHOWN ON STRUCTURAL DRAWINGS.
11. DETAILS LABELED "TYPICAL DETAILS" ON THE DRAWINGS APPLY TO ALL SITUATIONS THAT ARE THE SAME OR SIMILAR TO THOSE SPECIFICALLY DETAILED. SUCH DETAILS APPLY WHETHER OR NOT THEY ARE KEYS IN AT EACH LOCATION. QUESTIONS REGARDING APPLICABILITY OF TYPICAL DETAILS SHALL BE RESOLVED BY THE ARCHITECT/ENGINEER.
12. REVISIONS ARE IDENTIFIED BY A REVISION NUMBER WITHIN A TRIANGLE. ALL REVISIONS ISSUED ON A SINGLE DATE WILL BE IDENTIFIED BY THE SAME REVISION NUMBER ISSUED CONSEQUENTLY.
13. CURRENT REVISIONS ARE ENCIRCLED BY AN IRREGULAR "CLOUD" AS WELL AS FLAGGED WITH THE CURRENT REVISION NUMBER. CLOUDS ARE REMOVED FROM PREVIOUSLY ISSUED REVISIONS.
14. DESIGN LOADS AND CRITERIA:

FLOOR LIVE LOAD	40 PSF
PARTITION LOAD	20 PSF
ROOF LIVE LOAD	20 PSF
ROOF DEAD LOAD	SELF WEIGHT
- WIND CRITERIA
- ASCE 7-05
- BASIC WIND SPEED
- 140 MPH
- EXPOSURE CATEGORY
- B
- IMPORTANCE FACTOR
- 1.15
- STRUCTURE TYPE
- ENCLOSED

1. WHERE SPECIFIED USE WEDGE-TYPE EXPANSION ANCHORS MANUFACTURED FROM COLD-ROLLED (70,000 PSI YIELD) STEEL AND CONFORMING TO ONE OF THE FOLLOWING MIN. STANDARDS:
FED. SPEC. 003-325C, TYPE I OR II, CLASS 3
FED. SPEC. FF-S-325 GROUP II, TYPE 4, CLASS I
I.C.B.O. APPROVAL
2. INSTALL AND MAINTAIN A MIN. EMBEDMENT IN ACCORDANCE WITH MANUFACTURER'S SPECIFICATION, AND EXPANSION ANCHOR MANUFACTURER'S INSTITUTE, OR AS SPECIFIED ON DRAWING, WHICHEVER IS GREATER, BUT WITH AN EMBEDMENT OF NOT LESS THAN 5 BOLT DIAMETERS. PROVIDE ANCHOR SPACING OF 10 BOLT DIAMETER. PROVIDE MIN. EDGE DISTANCE OF 5 BOLT DIAMETERS.
- 3.

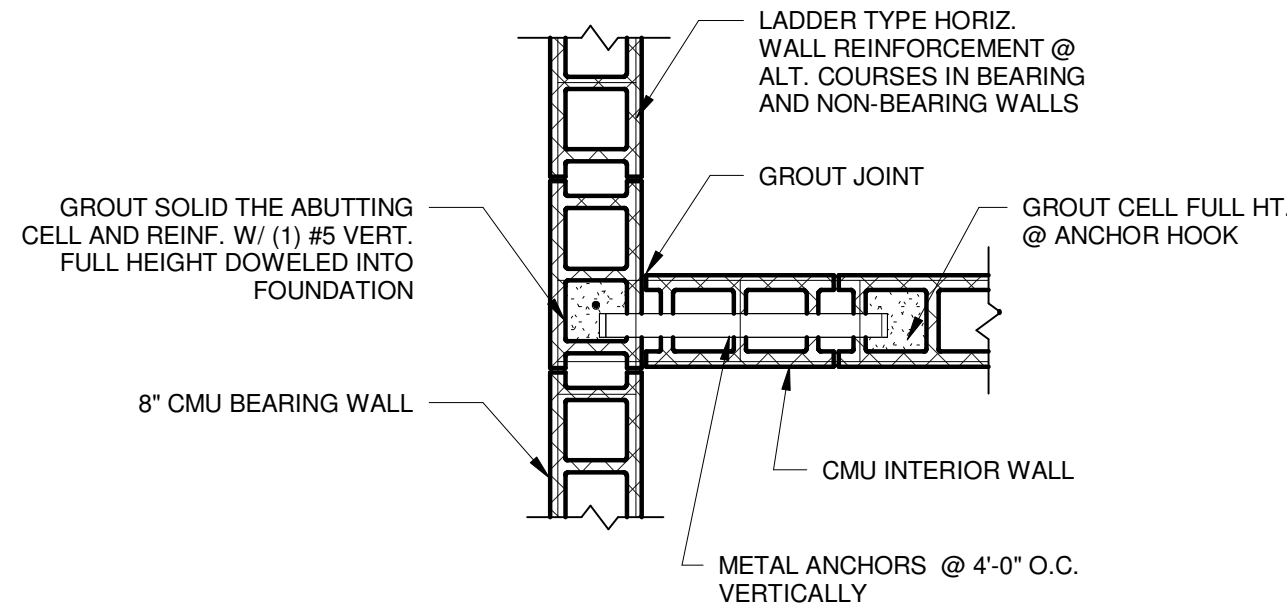
1. WHERE SPECIFIED USE AN EPOXY OR POLYESTER RESIN ADHESIVE SUCH AS HILTI HT HY 150, HILTI HVA, SIKKA SKADUR 32 HI-MOD (FOR HORIZONTAL AND VERTICAL SURFACES), SKADUR 31 HI-MOD GEL (FOR OVERHEAD) OR ACCEPTED ALTERNATE.
2. FOLLOW MANUFACTURER'S SPECIFICATIONS FOR USE AND INSTALLATION.
3. INSTALL AND MAINTAIN A MIN. EMBEDMENT IN ACCORDANCE WITH MANUFACTURER'S SPECIFICATIONS, OR AS SPECIFIED ON DRAWINGS.
4. DIAMETER OF HOLE SHALL BE AS RECOMMENDED BY MANUFACTURER FOR THE PARTICULAR PRODUCT SPECIFIED IN THE DRAWINGS.
5. UNITS MUST MEET ANCHOR SPACING AND ANCHOR EDGE DISTANCE SHALL BE ACCORDING TO THE MANUFACTURER'S MOST CURRENT PUBLICATION IN ORDER TO DEVELOP MAXIMUM WORKING LOADS.
6. DO NOT EXCEED MANUFACTURER'S MAX. RECOMMENDED TIGHTENING TORQUE.
7. ALL ANCHORS SHALL BE INSTALLED AS PER MANUFACTURER'S RECOMMENDATIONS AND UNDER MANUFACTURER'S SUPERVISION IN ORDER TO DEVELOP THE MOST CURRENT PUBLISHED WORKING LOADS.
8. ALL EPOXIED ANCHORING SHALL BE TESTED AFTER INSTALLATION AT CONTRACTOR'S EXPENSE. A MINIMUM OF 10% OF EACH DAYS APPLICATIONS AND NO LESS THAN 2 SHALL BE TESTED BY FOLLOWING A TESTED AND APPROVED TESTING PROCEDURE. IF A TEST APPLICATION FAILS, ALL APPLICATIONS FOR THAT DAY SHALL BE TESTED. TESTING PROCEDURES AND RESULTS SHALL BE SUBMITTED AND APPROVED BY ENGINEER.

1. WHERE SPECIFIED USE POWDER ACTUATED FASTENING SYSTEMS SUCH AS HILTI, RED HEAD, RAMSET, OR AN ACCEPTED ALTERNATE HAVING ICBO, OR SBOGI APPROVAL. INSTALL IN ACCORDANCE WITH MANUFACTURER'S SPECIFICATIONS, BUT NOT MORE THAN 1" IN CONCRETE U.O.N.
2. PROVIDE A MINIMUM ANCHOR SPACING AND EDGE DISTANCE AS RECOMMENDED BY MANUFACTURER.
3. ALLOWABLE WORKING LOADS SHALL NOT EXCEED MANUFACTURER'S RECOMMENDATIONS, BUT NOT MORE THAN ACCEPTED BY APPROVING AGENCY. NO INCREASE FOR WIND OR SEISMIC LOADS PERMITTED.
4. PROVIDE A MINIMUM OF TWO FASTENERS PER CONNECTION.

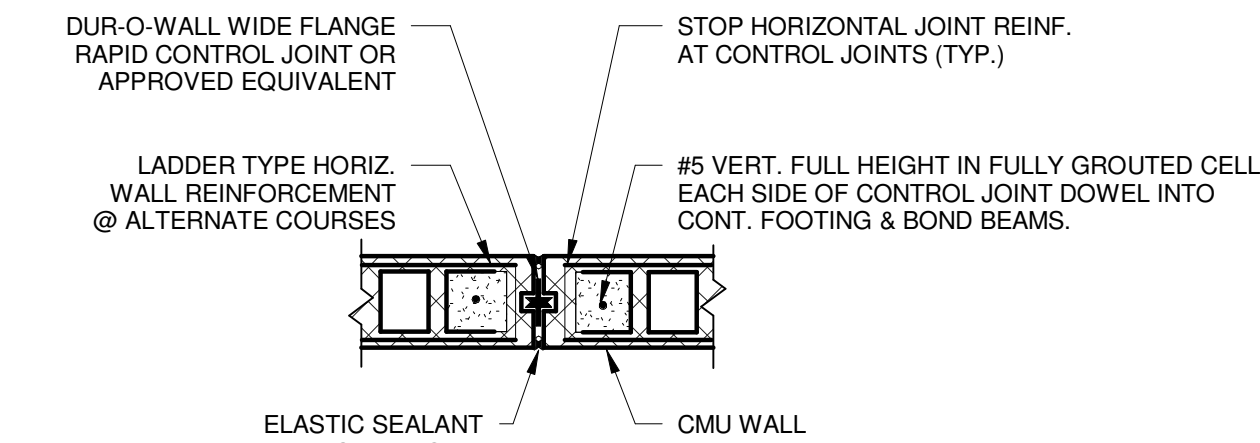


② DETAIL - TYP. BEARING WALL CORNER
3/4" = 1'-0"

③ 8"x16" BOND BEAM
3/4" = 1'-0"

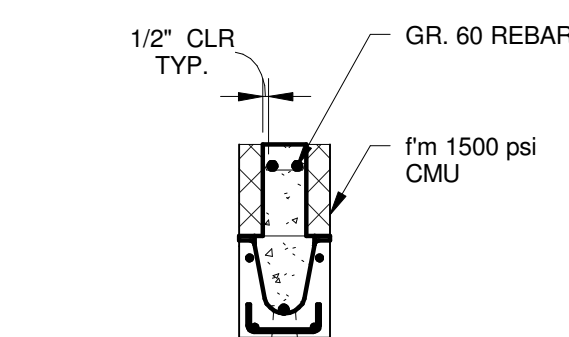


6 DETAIL - TYP. WALL INTERSECTION
3/4" = 1'-0"



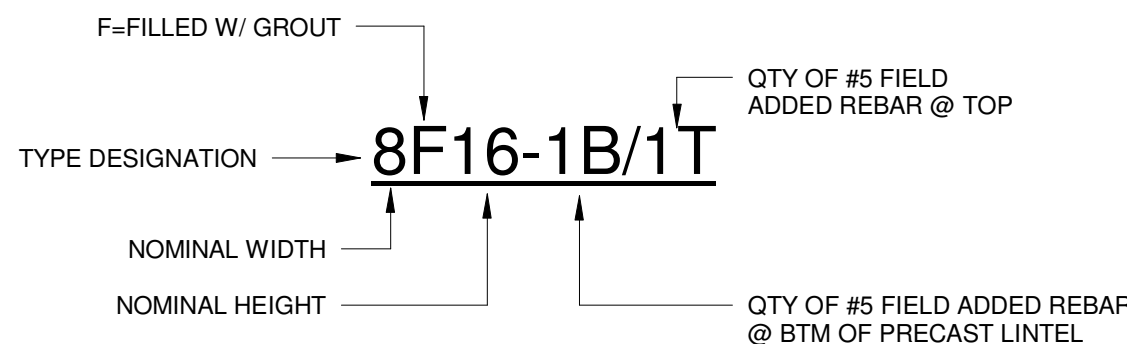
⑤ TYP. JAMB DETAIL
3/4" = 1'-0"

8 TYPICAL REINF. @ CONTROL JOINT
3/4" = 1'-0"

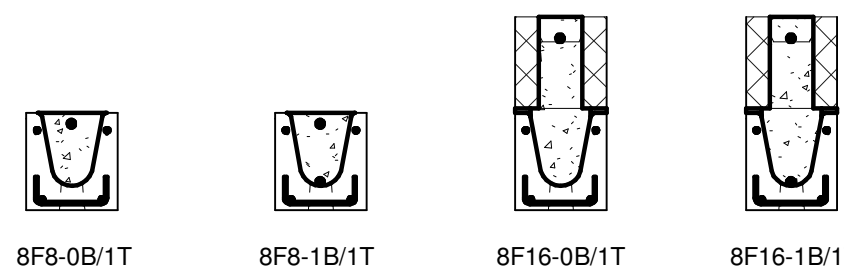


7) DETAIL - MECH. WALL PENETRATION
3/4" = 1'-0"

8 TYPICAL REINF. @ CONTROL JOINT
3/4" = 1'-0"



TYPE DESIGNATION ILLUSTRATION
SEE PLANS/ELEVATIONS FOR REQUIRED
LINTEL DESIGNATIONS



EXAMPLES OF PRECAST LINTEL TYPE DESIGNATIONS

9 TYP. PRE-CAST LINTEL DETAILS
3/4" = 1'-0"

1. REF. ARCH/MECH DRAWINGS FOR SIZE AND LOCATION OF ALL MASONRY OPENINGS.
2. PRE-CAST LINTEL BLOCKS TO EXTEND MIN. 8" BEYOND EACH SIDE OF MASONRY OPENING UNLESS OTHERWISE NOTED.
3. REMOVE FACE SHELLS OF MASONRY UNITS AT JAMBS TO INSURE CONTINUITY OF REINFORCING AND GROUT FILL AT INTERSECTION OF REINFORCED JAMBS AND LINTELS/SILLS.
4. REMOVE ALL MASONRY UNITS AT EXISTING LINTELS AT PRE-CAST LINTELS.
5. SHORE LINTELS TO PREVENT DEFLECTION. DO NOT REMOVE SHORES UNTIL GROUT HAS ACHIEVED MIN. 70% OF DESIGN STRENGTH.
6. BOTTOM FIELD ADDED REBAR TO BE LOCATED AT BOTTOM OF PRE CAST LINTEL.
7. THE EXTERIOR SURFACE OF LINTELS INSTALLED IN EXTERIOR CONCRETE MASONRY WALLS SHALL RECEIVE A COATING OF STUCCO APPLIED IN ACCORDANCE WITH ASTM C-926 OR OTHER ARCH. APPROVED OR SPECIFIED COATING.
8. 16" x 8" x 8" BRICK LINTEL AT EACH MASONRY OPENING TO RECEIVE BRICK VENEER. FOR MASONRY OPENINGS LESS THAN OR EQUAL TO 5'-0" IN WIDTH 16" BRICK LINTEL TO BE LOOSE. FOR MASONRY OPENINGS GREATER THAN 5'-0" ATTACH BRICK LINTEL TO PRE-CAST LINTEL USING 1/2" DIA. ANCHORS W/ MIN. 3" 1/2" EMBEDMENT DEPTH @ 32" CENTERS.
9. PRE-CAST LINTEL DESIGN AND DETAILS ARE BASED ON CAST-CRETE PRODUCTS. CONTRACTOR TO SUBMIT TECHNICAL INFORMATION FOR ANY PROPOSED ALTERNATE MATERIALS FOR REVIEW BY ENGINEER AS PART OF MASONRY SHOP DRAWING PACKAGE.

PINDER-MARTIN
ASSOCIATES, INC
1001 N. 12th AVENUE
PENSACOLA, FL 32501
850-439-9110

AA26000896

PROJECT:
5 CLASSROOM ADDITION

LOCATION:
WEST NAVARRE INTERMEDIATE
SCHOOL
1970 COTTON BAY LANE
NAVARRE, FL 32566

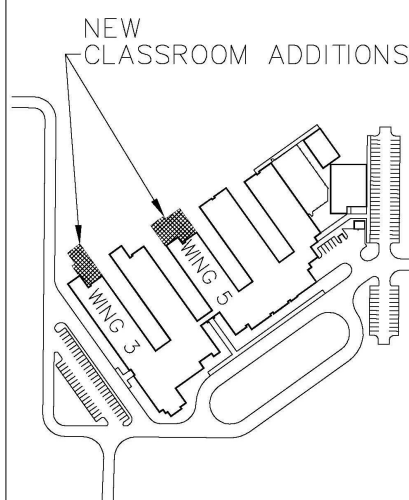
CONSULTANTS:

JEHLE-HALSTEAD INC.
49 EAST CHASE STREET
PENSACOLA, FL 32502

CRAFT & WEBSTER
STRUCTURAL ENGINEERS, INC.
129 HIGHPOINT DRIVE
GULF BREEZE, FL 32561

GULF BREEZE CONSULTING, INC
139 EAST GOVERNMENT STREET
PENSACOLA, FL 32502

ADAMS CONSULTING
ENGINEERING, INC.
3 WEST GARDEN STREET - SUITE 382
PENSACOLA, FL 32502



WEST NAVARR
INTERMEDIATE

[illegible]

DRAWN BY:	Author
CHECKED BY:	Checker
C&W S E PROJECT #:	11-046
REVIEW:	09-06-11
PERMITTING:	09-09-11
RELEASE FOR BIDDING:	09-19-11

STRUCTURAL NOTES

S0.0